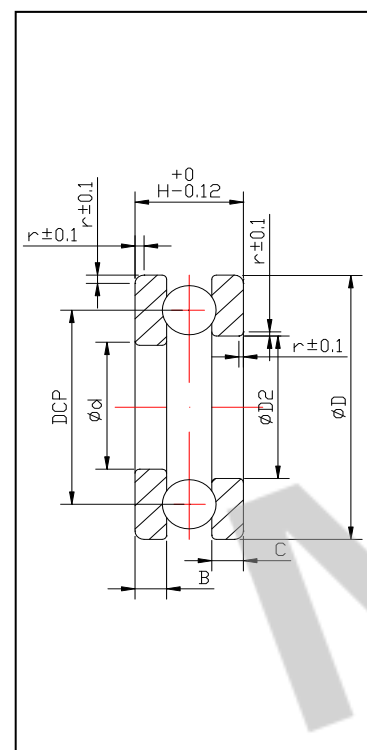


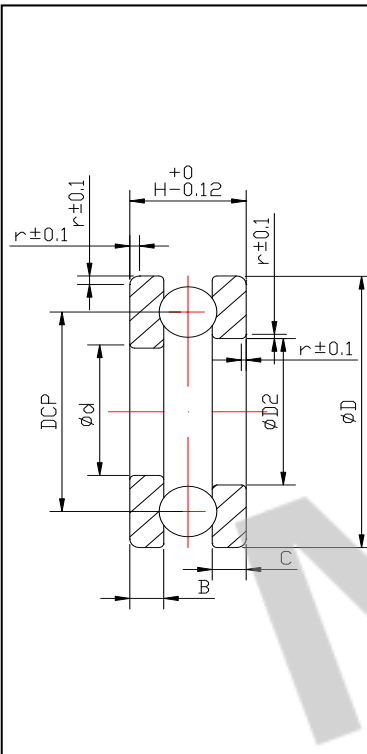
平面推力系列



型号	d	D	D2	C	d2	B	H	Re(R1)	DCP	Dw	Z	r	De(d1)
F4-9M	4	9	4.2	1.3	8.8	1.3	4	1.667	6.5	1.588	8	0.2	1.2
51-413	4	13	4.2	1.7	12.8	1.7	5	2.1	8.5	2	7	0.2	1.5
F5-10M	5	10	5.2	1.3	9.8	1.3	4	1.667	7.5	1.588	9	0.2	1.2
B7	7	17	7.5	1.7	16.5	1.7	6	3.32	12	3.175	8	0.3	1.41
F8-16M	8	16	8.2	1.2	15.8	1.2	5	3.15	12	3	9	0.2	1
10-18	10	18	10.3	2.2	17.7	2.2	7	3.32	14	3.175	9	0.2	1.9
51100	10	24	10.4	2.5	23.5	2.5	9	5	17	4.762	9	0.4	2.119
GR1020	10	20	10.5	1.2	19.5	1.2	5	3.15	15	3	10	0.2	1
51101	12	26	12.5	2.5	25.5	2.5	9	5	19	4.762	10	0.6	2.11
51201	12	28	12.5	3.3	27.5	3.3	11	5.72	20	5.556	10	0.5	2.72
51102	15	28	15.2	2.5	27.8	2.5	9	5	21.5	4.762	12	0.5	2.1
51202	15	32	17	3.5	31.8	3.5	12	6.24	23.5	5.953	11	0.6	3
ZB001	15.875	28.575	16.075	4.55	28.375	4.55	12.5	4.2	22	3.969	10	1	4.25
51103	17	30	17.2	2.4	29.8	2.4	9	5	23.5	4.762	13	0.6	2.11
51203	17	35	17.5	3.5	34.5	3.5	12	6.64	26	6.35	11	0.6	2.8
F3-8M	3	8	3.2	0.9	7.8	0.9	3	1.667	5.5	1.588	6	0.2	0.7
F8-12	8	12	8.1	2.08	11.9	2.08	5	1.05	10	1	11	0.2	1.98
F4-10M	4	10	4.2	1.3	9.8	1.3	4	1.667	7	1.588	9	0.2	1.2
F5-11M	5	11	5.2	1.55	10.8	1.55	4.5	1.667	8	1.588	10	0.2	1.44
F9-20M	9	20	9.5	2.2	19.5	2.2	7	3.32	14.5	3.175	9	0.2	1.9
51200	10	26	10.5	3.2	25.5	3.2	11	5.72	18	5.556	9	0.4	2.71

第44页

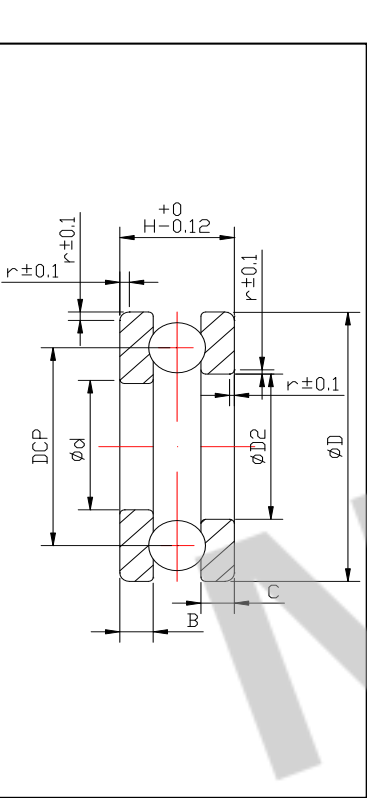
平面推力系列



型号	d	D	D2	C	d2	B	H	Re(R1)	DCP	Dw	Z	r	De(d1)
51104	20	35	21.3	2.7	34.8	2.7	10	5.72	27.5	5.556	13	0.5	2.2
51204	20	40	20.5	4	39.5	4	14	7.5	30	7.144	10	1	3.428
P20/37	20	37	20.5	2.5	36.5	2.5	9	5	28.5	4.762	14	0.6	2.1
51105	25	42	25.3	3.2	41.8	3.2	11	5.72	33.5	5.556	16	0.6	2.72
非51105	25	42	25.5	2.1	41.5	2.1	8	5	33.5	4.762	21(满)	0.6	1.61
非51105-T	25	42	25.5	1.7	41.5	1.7	6	3.32	33.5	3.175	21	0.6	1.41
非51105-6.8	25	42	25.5	2.1	41.5	2.1	6.8	3.32	33.5	3.175	21	0.6	1.81
51205	25	47	25.2	4.1	46.8	4.1	15	8.34	36	7.938	13	0.8	3.5
4855	27.5	34	27.7	3.2	33.8	3.2	8	2.1	30.75	2	27	0.3	3
51106	30	47	30.5	3.16	46.5	3.16	11	5.72	38.5	5.556	18	0.8	2.72
51206	30	52	30.5	4.7	51.5	4.7	16	8.34	41.2	7.938	14	1.2	4.031
51107	35	52	35.5	3.4	51.5	3.4	12	6.64	43.5	6.35	18	1	2.825
51207	35	62	35.2	5	61.8	5	18	10	48.5	9.525	13	0.8	4.2
51306	30	60	30.5	6	59.5	6	21	11.66	45.5	11.1125	10	1.2	4.9
P30/41	30	41	30.5	2.75	40.5	2.75	8	3.32	35.5	3.175	17	0.6	2.4
F7-13M	7	13	7.5	1.55	12.5	1.55	4.5	1.667	10	1.588	11	0.2	1.44
F6-12M	6	12	6.5	1.55	11.5	1.55	4.5	1.667	9	1.588	10	0.2	1.44

第45页

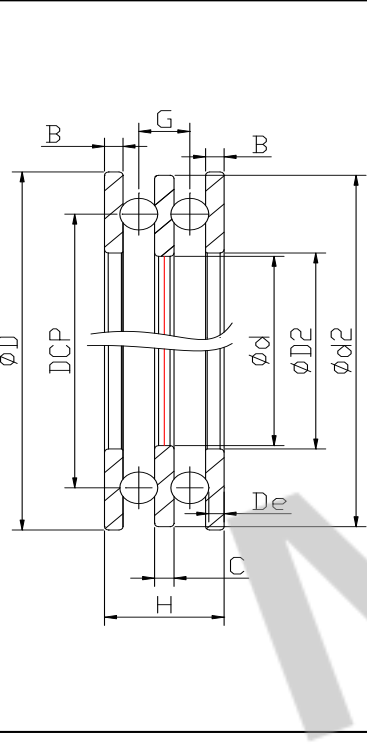
平面推力系列



型号	d	D	D2	C	d2	B	H	Re(R1)	DCP	Dw	Z	r	De(d1)
51108	40	60	40.5	3.76	59.5	3.76	13	7.5	50	7.144	19	1	2.928
51208	40	68	40.5	5.6	67.5	5.6	19	10	54	9.525	15	1.2	4.74
51109	45	65	45.5	4.1	64.5	4.1	14	7.5	55	7.144	20	1.2	3.42
51209	45	73	46	5.8	72	5.8	20	5.4	59	10.319	14	1.2	4.84
51110	50	70	50.5	4.12	69.5	4.12	14	7.5	60	7.144	22	1.2	3.42
51310	50	95	52	8.8	95	8.8	31	17.5	72.5	16.669	11	1.2	7.1
ZB002	60	85	61	3	84	3	10	5.72	72.5	5.556	28	0.8	2.2
51112	60	85	60.5	5	84.5	5	17	9.16	72.5	8.731	18	1.2	4.12
51312	60	110	62	10.7	108	10.7	35	18.34	85	17.462	10	1.2	8.76
86/64	64	86	65	5	85	5	14	8.34	75	7.938	29	1	3
51117	85	110	85.4	5.6	109.6	5.6	19	9.8	97.5	9.525	25	0.8	4.7
51122	110	145	111	7.5	144	7.5	25	13.34	127.5	12.7	26	1.2	6.15
51213	65	100	65.5	8.4	99.5	8.4	27	13.34	82.5	12.7	17	1	7.13
51111	55	78	55.5	4.7	77.5	4.7	26	8.34	66.5	7.938	18	0.8	4.7
51212	60	95	60.5	8	94.5	8	26	13.34	77.5	12.7	14	1	6.7
51412	60	130	60.5	15.3	129	15.3	51	26.67	95	25.4	8	1.5	12.8

第46页

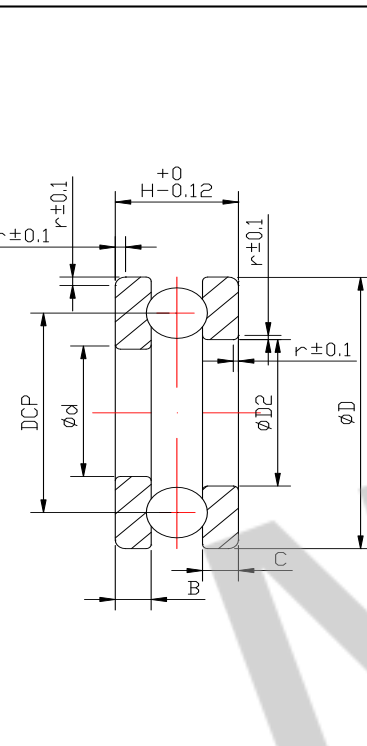
平面推力系列(三片)



型号	d	D	D2	B	d2	H	Re(R1)	DCP	Dw	Z	r	G	De
B5	50.8	76.2	51.8	2.3	75.2	15	5	63.5	4.762	27	0.6	6.4	1.92
53201									5.556				

第47页

平面推力系列



型号	d	D	D2	C	d2	B	H	Re(R1)	DCP	Dw	Z	r	De(d1)
51108	40	60	40.5	3.76	59.5	3.76	13	7.5	50	7.144	19	1	2.928
51108	40	60	42	3.76	59.5	3.76	13	7.5	50	7.144	19	1	2.928

第46页