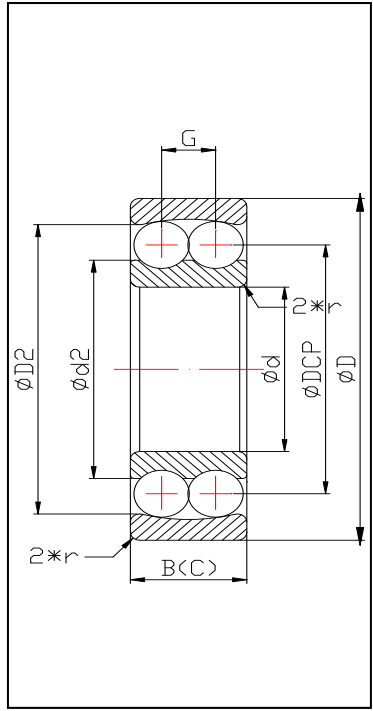
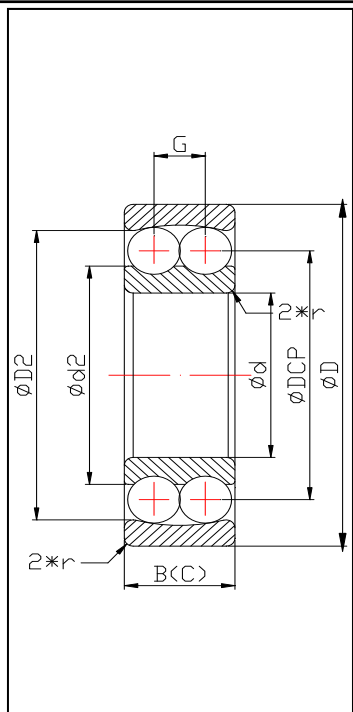


调心系列



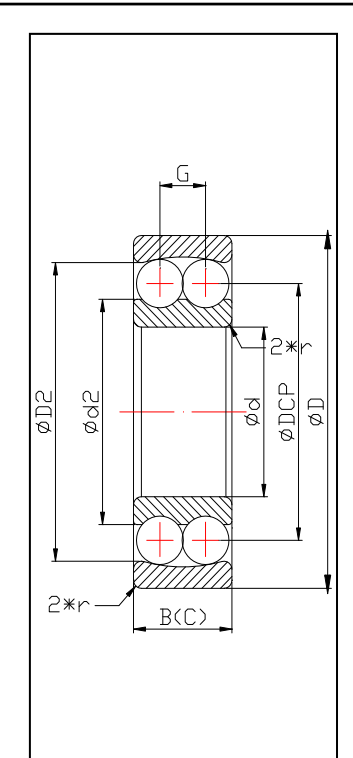
型号	d	D	D2	De	Re	C	DCP	d2	d1	R1	B	沟心距G	Dw	Z	r
FT515	5	15	11.75	12.82	6.42	5.5	10	8.12	7.62	2.4	5.5	2.9	2.381	9*2	0.5
1001	10	26	20.5	21.78	10.89	8	18	15.55	14.825	3.26	8	4.6	3.175	12*2	0.6
1200		30	23.6	24.72	12.36	9	19.6	16.2	14.8	4.92	9	4.36	4.762	8*2	0.8
2200		30	23.3	26.32	13.16	14	20	15.5	14.047	6.12	14	8	5.953	8*2	0.8
2200-LL	30	23.15	24.69	12.345	14	20.2	16.95	16.231	4.1	14	4.5	3.969	9*2	0.8	
1201	12	32	25.3	26.7	13.35	10	21.5	18.15	16.7	4.92	10	4.85	4.762	10*2	0.8
2201		32	26.4	29.38	14.69	14	22	17.8	16.047	6.12	14	7.7	5.953	9*2	1
1202	15	35	28.95	30.48	15.24	11	24.5	20.5	18.86	5.72	11	5.51	5.556	10*2	0.8
1202-LL		35	26.5	28.44	14.22	11	25	29.1	28.3	3.26	11	4	3.175	15*2	0.8
1302		42	33.4	34.95	17.48	13	27.82	23.6	21.5	6.52	13	6.35	6.35	10*2	0.8
2302		42	34.5	37.95	18.98	17	29.3	24.4	22.156	7.35	17	9.15	7.144	10*2	1
2202		35	29.7	32.07	16.035	14	25.22	21	19.27	6.12	14	6.5	5.953	10*2	0.8
TK202	35	28.3	31	15.5	14	24.32	20.4	18.76	5.72	14	7	5.556	11*2	0.8	
RMS5-T	15.875	46.038	35.8	38.8	19.4	15.875	31	27	24.65	6.52	15.875	9.2	6.35	11*2	0.8
RL-5	15.875	39.6875	32.3	33.94	16.97	11.1125	27.78	23.86	22.22	5.72	11.1125	5.556	5.556	10*2	0.8
1203	17	40	32.5	34.1	17.05	12	28.1	24.15	22.5	5.72	12	5.71	5.556	12*2	0.8
2203	17	40	33	36.36	18.18	16	28.5	24.5	22.15	6.52	16	9.4	6.35	9*2	0.8
T108	8	22	17	18.15	9.8	7	15	13.3	12.619	2.4	7	4.4	2.381	10*2	0.8

调心系列



型号	d	D	D2	De	Re	C	DCP	d2	d1	R1	B	沟心距G	Dw	Z	r
1203	17	40	32.5	34.1	17.05	12	28.1	24.15	22.5	5.72	12	5.71	5.556	12*2	0.8
2203	17	40	33	36.36	18.18	16	28.5	24.5	22.15	6.52	16	9.4	6.35	9*2	0.8
1004	20	42	34.9	36.98	18.49	12	31	27.1	25.44	5.72	12	5.6	5.556	12*2	0.8
1204		47	37.8	39.72	19.86	14	32.9	28.5	26.55	6.52	14	6.07	6.35	12*2	0.9
1304		52	43	45.28	22.6	15	37.45	32	30.31	7.35	15	7.6	7.144	11*2	1
2204	47	39.5	42.929	21.5	18	33.5	28.3	25.86	8.16	18	9.05	7.938	11*2	1	
2304	52	41.9	46.56	23.35	21	36	30.1	27.28	9	21	11.5	8.731	11*2	1.25	
1205	25	52	43.6	45.52	22.76	15	37.844	33.2	30.7	7.35	15	6.95	7.144	12*2	1
1305		62	50.9	53.138	26.6	17	43.63	37.2	34.897	9	17	8.15	8.731	12*2	1.2
2205		52	43.6	46.22	23.11	18	37.8	32.8	30.6	7.35	18	11	7.144	13*2	1.25
2205TN	52	44.8	47.8	23.9	18	38.86	33.4	30.922	8.16	18	8.9	7.938	13*2	1.2	
2305	62	50.2	54.856	27.428	24	42.574	35.4	32.255	10.62	24	13.623	10.319	11*2	1.3	
1206	30	62	52.3	53.88	26.94	16	45.5	40	37.47	8.16	16	7.5	7.938	14*2	1.25
2206		62	52	54.6	27.3	20	45.3	39.8	37.37	8.16	20	12.1	7.938	14*2	1.25
1207		72	59.6	61.3	30.65	17	53.5	47.3	44.86	8.16	17	8.33	7.938	15*2	1.25
1307	35	80	67.8	70.2	35.1	21	59.1	52	48.8	10.62	21	9.819	10.319	14*2	1.5
T2307		80	61.7	68.74	34.4	31	57.5	50.87	47.98	9.8	31	13.488	9.525	14*2	1.5
2307	80	66.7	72.5	36.25	31	56.3	46.6	42.85	13.9	31	17.268	13.494	11*2	2	

调心系列



型号	d	D	D2	De	Re	C	DCP	d2	d1	R1	B	沟心距G	Dw	Z	r
1208	40	80	68	69.49	34.622	18	60.071	54	51.34	9	18	8.914	8.731	17*2	1.5
1208-LL	40	80	64.3	66.45	33.225	18	60.071	56	54.118	6.12	18	6.3	5.953	22*2	1.5
2208	40	80	67.6	70.36	35.18	23	59.3	52.8	49.77	9.8	23	13.41	9.525	16*2	1.5
1209	45	85	72.6	74.56	37.3	19	64.35	57.6	54.83	9.8	19	9.2	9.525	16*2	1.5
1309	45	100	83.9	86.73	43.2	25	72.9	63.8	60.2	13.08	25	12.33	12.7	15*2	2
2210	50	90	78	80.274	40.146	23	69.438	62.8	59.913	9.8	23	13.488	9.525	18*2	1.5
2312K	60K	130	109.5	116.72	58.36	46	93.3	78.3	72.6	21.26	46	25.6	20.638	12*2	2
2213	65	120	102.9	107.1	54	31	91.83	82.34	78.34	13.9	31	17.447	13.494	18*2	2.5
2214	70	125	109	112.83	56.42	31	98.55	88.2	84.28	13.9	31	17.53	13.494	19*2	2
2216	80	140	121.75	125.25	62.66	33	109.36	99.24	95.07	14.72	33	18.61	14.288	20*2	2.5
1216	80	140	122.8	125.14	62.57	26	111.72	101.9	99.02	13.08	26	12.1	12.7	22*2	2
FT010	165.1	215.9	202.5	205.07	102.55	33	190.5	180.9	177.01	13.9	33	18.61	13.494	30*2	2
1310	50	110	92	94.98	47.49	27	80.22	72	66.73	13.9	27	13.17	13.494	10*2	2
2212	60	110	94.6	97.783	49.256	28	84.36	76	72.453	12.4	28	15.69	11.906	16*2	2
1201-LL	12	32	22.5	24.1	12.05	10	21.5	19.8	19.12	2.4	10	3	2.381	12*2	0.8
1205-LL	25	52	41	43	21.5	15	37.8	34.4	33	4.92	15	5.5	4.762	14*2	1
1301	12	37	29.5	31.37	15.68	12	24.35	19.6	17.94	6.82	12	5.7	6.35	9*2	0.8